

# BANGKOK WASTE MANAGEMENT INFORMATION

BY BANGKOK METROPOLITAN ADMINISTRATION



## WHAT'S INSIDE:

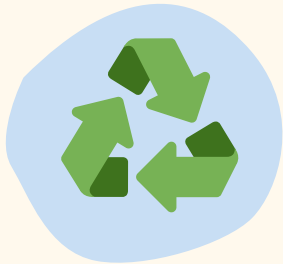
- TYPES OF WASTE
- BMA WASTE COLLECTING SERVICE
- SERVICE CHANNELS
- SERVICE FEES/CHARGES
- CONTACT INFORMATION

**Prepared by:**

International Affairs Office, BMA

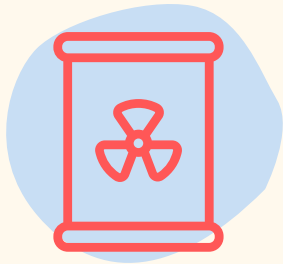
# 4 Types of Waste separation

FOR MANAGEMENT IN BANGKOK CITY



## 1. General Waste Service

general, recyclable, hazardous, organic



## 2. Infectious Waste Collection and Delivery Service



## 3. Sewage Collection Service

(Fats, oil, and grease)



## 4. Construction and Demolition Waste Collection Service



# General Waste

SEPARATION GUIDE AND WASTE LITTERING METHODS

## General

Non-recyclable plastic/ Unsalable plastic/ Foam/ Packaging/  
Rubber/ Rag/ Paper/ Surplus vegetable waste

### Littering Methods

1. Put into bag and tie with ribbon or rope.
2. Place at the collection point for collection by appointment.

## Recyclable

Salable stuff/ paper/ recyclable plastic/ glass/ metal can/ etc.

### Littering Methods

1. Put into yellow bag or tie bag with yellow ribbon or rope.
2. Place at the collection point for collection by appointment.

## Hazardous

Chemical container/ Battery/ Light bulb/ Expired medicine/  
Expired cosmetic

### Littering Methods

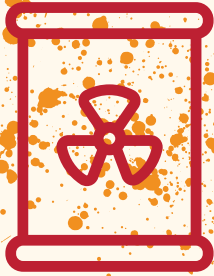
1. Put into orange bag or tie bag with orange ribbon or rope
2. Place at the collection point for collection by appointment.

## Organic

Vegetable scraps/ Food waste/ Leaves and branch/ etc.

### Littering Methods

1. Put into bag and tie with ribbon or rope.
  2. Place at the collection point for collection by appointment.
- Or: Make a compost in tray or basket, or make bio-extracts, biogas,  
or animal feed



# Infectious Waste

COLLECTION AND DELIVERY SERVICE

## Service Channels

**The Krungthep Thanakom Co., Ltd.**

Tel. 0 2726 0300 Fax. 0 2726 0310

Office Hours:

Open Mondays – Fridays (except public holidays)  
from 08.30 am.- 04.30 pm. (excluding lunch break)

**The Krungthep Thanakom Co., Ltd.**

<http://www.thanakom.co.th>

Tel. 0 2726 0301 Fax. 0 2726 0301 or

Email: [environment.kt@gmail.com](mailto:environment.kt@gmail.com)

Office Hours: Open 24 Hours

## Infectious Waste Collection Service Fee

**Monthly  
300 Baht**

- more than 2 kg. (13 liters)/ day
- collecting and delivering charge of every 2 kg. (13 liters), or excess of every 2 kg. (13 liters).

**One time  
400 - 3,000  
Baht**

- 2,000 Baht for collecting and delivering fee.
- 20 Baht added per one km. if exceeded 10 km. distance.
- 400 Baht for litter not more than 75 kg. (500 liters)
- 400 Baht added per 75 kg. (or 500 liters)
- if the amount exceeded 75 kg. (500 liters).



# Sewage

*COLLECTION SERVICE (FATS, OIL, AND GREASE)*

## Service Channels

### **BMA district office (50 offices)**

- Submit a statement of purpose letter to or contact in person at District Office in the area of service for fats, oil, and grease collection.

**Office Hours:** Open from Mondays – Fridays (except public holidays)  
From 08.00 am.- 04.00 pm.

### **Environment Department**

- Submit Formal Letter to Director-General of Environment Department or submit application in person

Address 111 Mitmaitri Road, Dindaeng District, Bangkok 10400

Tel. 0 2246 1975, 0 2246 1984 or

Fax. 0 2246 8116

**Office Hours:** Open from Mondays – Fridays (except public holidays)  
From 08.30 am.- 04.30 pm. (excluding lunch break)



# Construction & Demolition Waste

## COLLECTION SERVICE CHANNELS

### **BMA district office (50 offices)**

- Submit a statement of purpose letter to or contact in person or by postal service to the district office where the place requested for Construction and Demolition Waste Collection Service is located.
- Call *Public Cleansing and Public Park Section* of the District Offices requesting for Construction and Demolition Waste Collection Service / by telephone.

**Office Hours:** Open from Mondays – Fridays (except public holidays)  
From 08.00 am.- 04.00 pm.

### **Environment Department**

- Submit Formal Letter to Director-General of Environment Department or submit application in person.

Address 111 Mitmaitri Road, Dindaeng District, Bangkok 10400

Tel. 0 2246 1975 or 0 2246 1984

Fax. 0 2246 8116

**Office Hours:** Open from Mondays – Fridays (except public holidays)  
From 08.30 am.- 04.30 pm. (excluding lunch break)



# Construction & Demolition Waste

## COLLECTION SERVICE CHARGE

- |   |   |
|---|---|
| <b>1. Cutting of construction material waste and loading into the truck using labor force</b> | 90 Baht/cubic meter                                 |
| <b>2. Cutting of construction material waste and loading into the truck using labor force</b> | 125 Baht/cubic meter                                |
| <b>3. Collection fee</b>  |   |
| • Less than 10 km.  | 100 Baht/cubic meter                                |
| • More than 10 km.*<br><i>Fraction of each km. will be counted as 1 km.</i>                   | 100 Baht/cubic meter and added 15 Baht for each km. |
| <b>4. Construction and Demolition Waste Disposal</b>  | 500 Baht/Ton  |



For more detailed information, please see "BMA Waste Management Information" at [shorturl.at/koxyA](http://shorturl.at/koxyA).





# District Offices Contact Information

**Public Cleansing and Public Park Section,  
Pathumwan District Office**

Address: 12/1-4 Soi Rong Mueang 5, Rong Mueang,  
Pathumwan, Bangkok 10330  
Tel.: 0 2214 1045



**Public Cleansing and Public Park Section,  
Vadhana District Office**

Address: 1000/29-34 Liberty Plaza, 6th-8th Floor,  
Soi Sukhumvit 55 (Thong Lo), Sukhumvit Road,  
Klong Tan Nuea, Vadhana, Bangkok, 10110  
Tel.: 0 2381 8930 ext. 7018-7019



**Public Cleansing and Public Park Section,  
Huai Khwang District Office**

Address: 2 Pracha Uthit Road, Huai Khwang,  
Huai Khwang, Bangkok 10310  
Tel.: 0 2275 6786



**Public Cleansing and Public Park Section,  
Klong San District Office**

Address: 861 Lat Ya Road, Klong San,  
Klong San, Bangkok 10600  
Tel.: 0 2437 9995



**Public Cleansing and Public Park Section,  
Bang Rak District Office**

Address: 5 Naret Road, Si Phraya,  
Bang Rak, Bangkok 10500  
Tel.: 0 2234 3609



**Public Cleansing and Public Park Section,  
Sathon District Office**

Address: 59 Soi Chan 18/7 (Soi St. Louis 3), Thung Wat Don,  
Sathon, Bangkok 10120  
Tel.: 0 2211 9497





# Data Sources

1. Department of Environment, Bangkok Metropolitan Administration
2. City Relations Promotion Division, International Affairs Office, Bangkok Metropolitan Administration
3. Pathumwan District Office Website
4. Vadhana District Office Officials and Website
5. Huai Kwang District Office Officials and Website
6. Bang Rak District Office Website
7. Klong San District Office Website
8. Sathorn District Office Website